



CEO Presentation

May 2, 2011

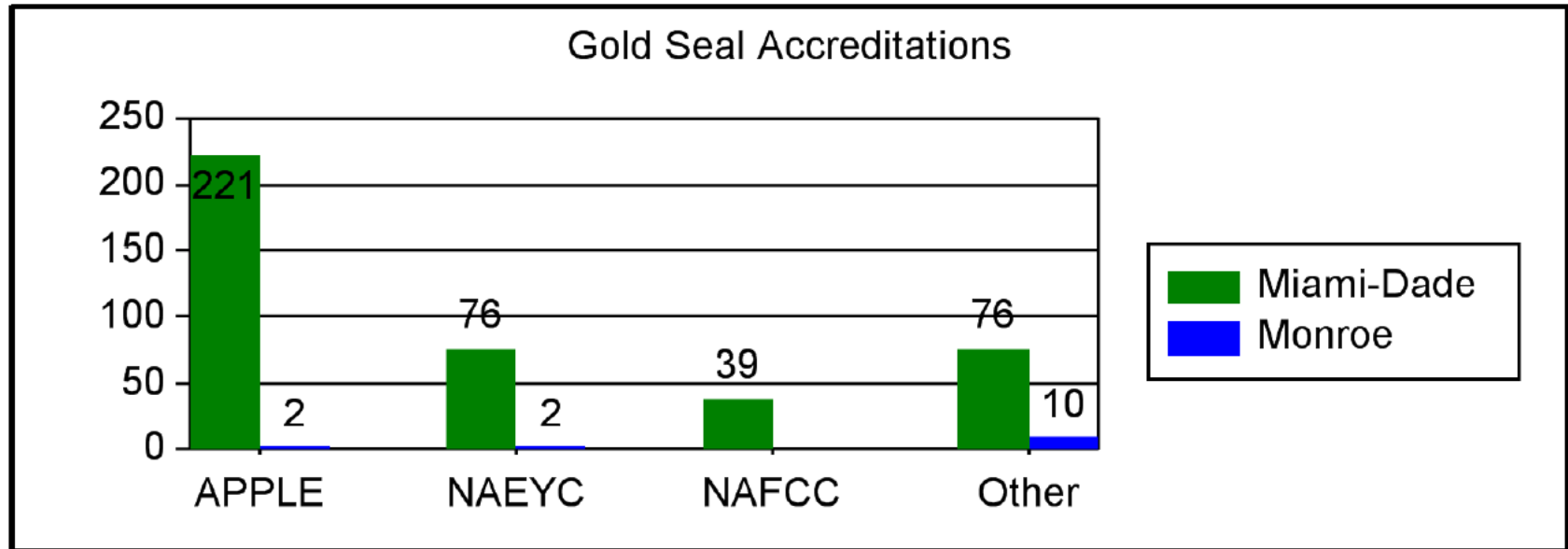
Miami-Dade/Monroe Accredited Individual Sites



Accredited Individual Sites by County

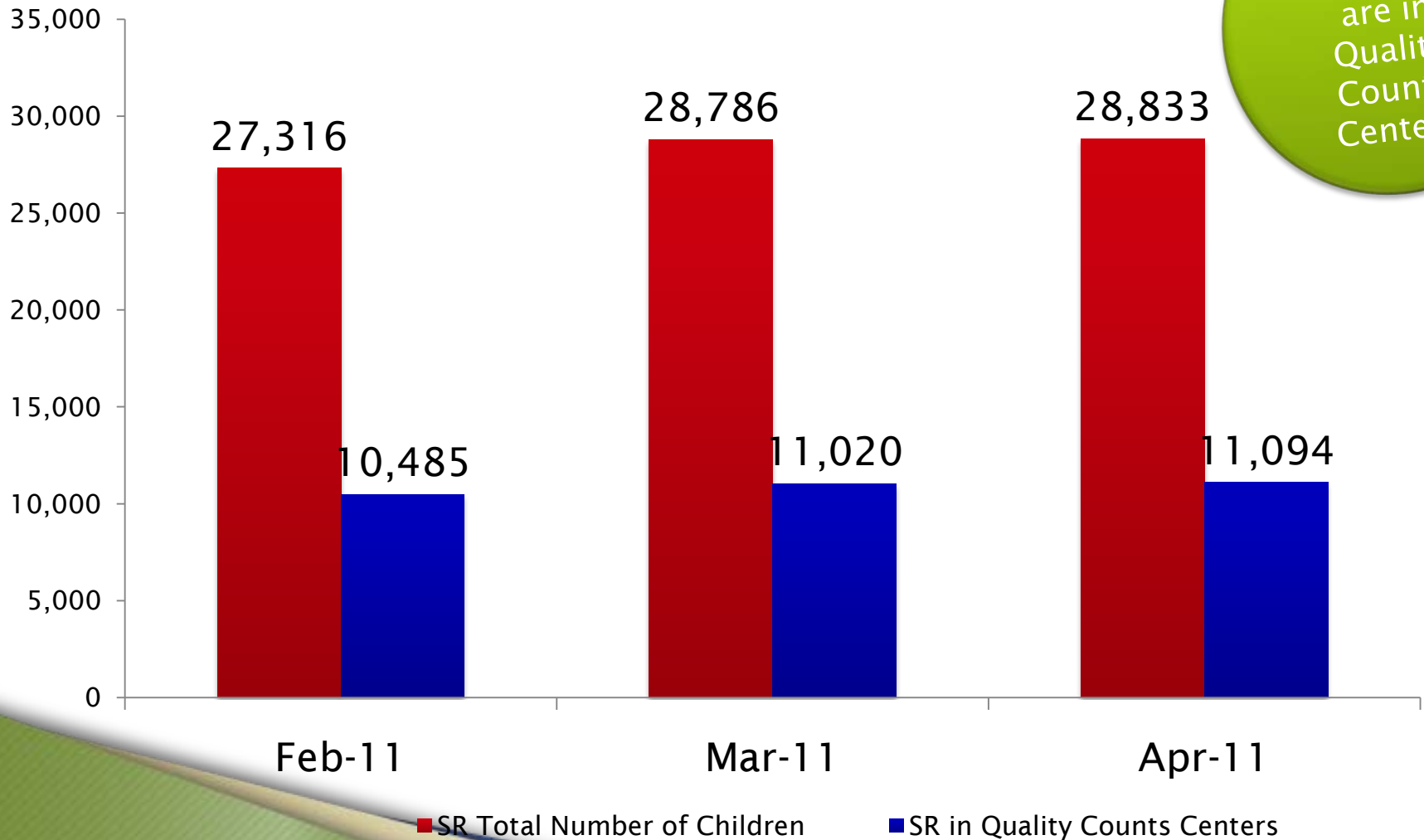
County	License Type	Sites
Miami-Dade	Center	366
Miami-Dade	Family	39
Monroe	Center	15
Total Sites		420

Miami-Dade/Monroe Gold Seal Sites



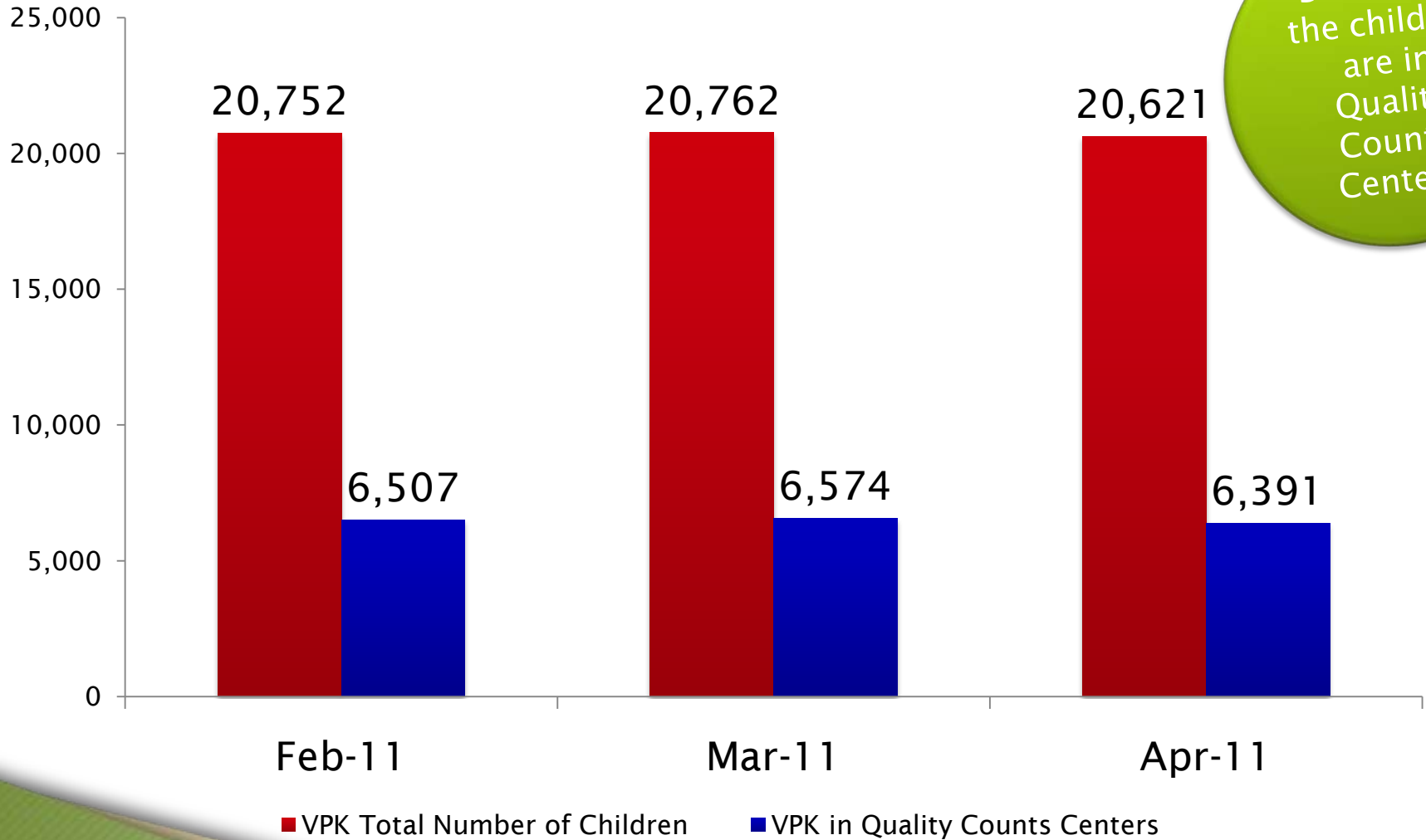
Note: Some sites are accredited by more than one accrediting body.

SR Children in Quality Counts Centers



38.48% of
the children
are in
Quality
Counts
Centers

VPK Children in Quality Counts Centers

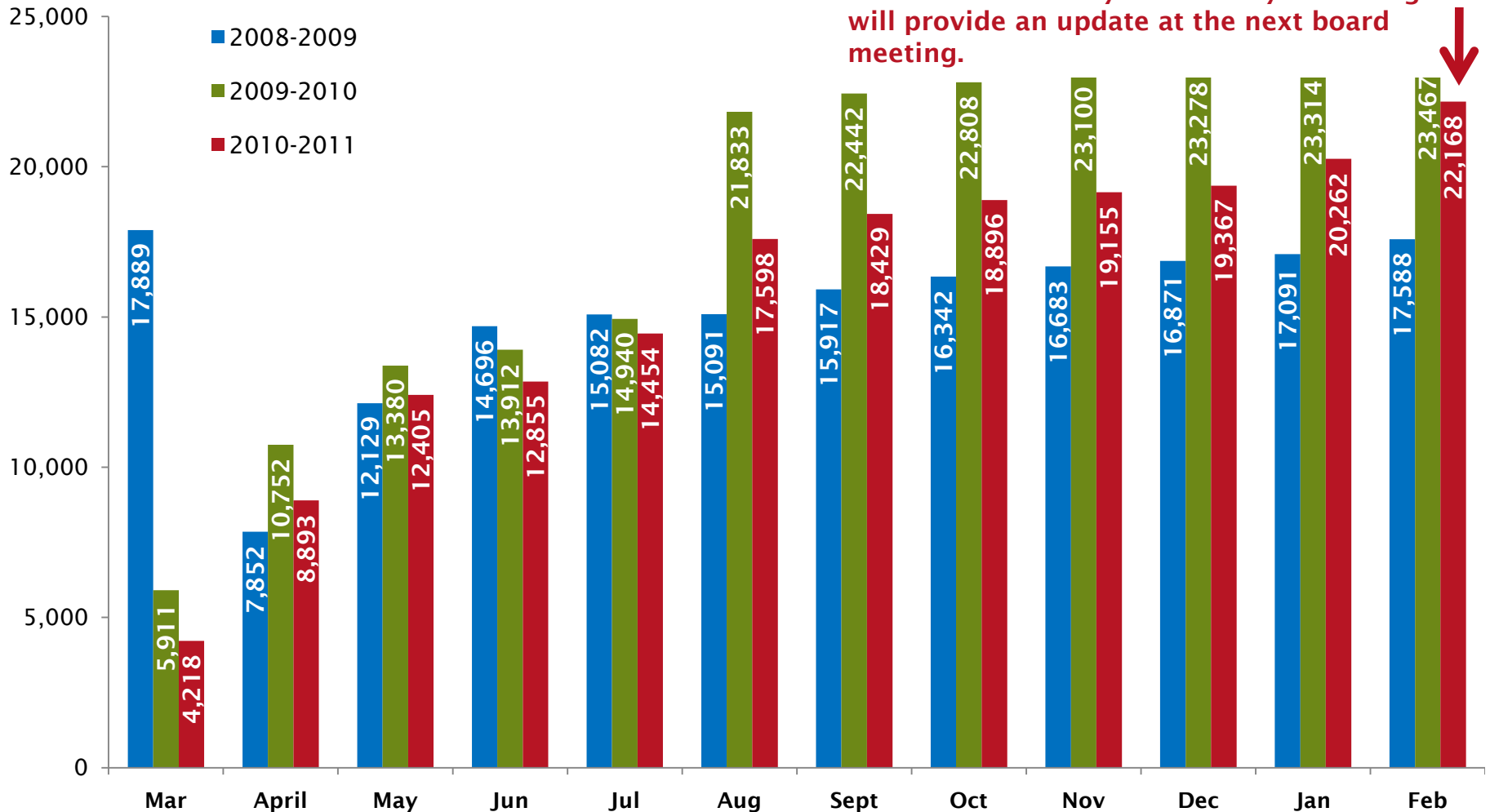


30.99% of
the children
are in
Quality
Counts
Centers

VPK Certificates of Eligibility Miami-Dade



1,299 fewer COEs issued than at this time last year, despite projected VPK enrollment increase. Miami-Dade County is currently reviewing and will provide an update at the next board meeting.



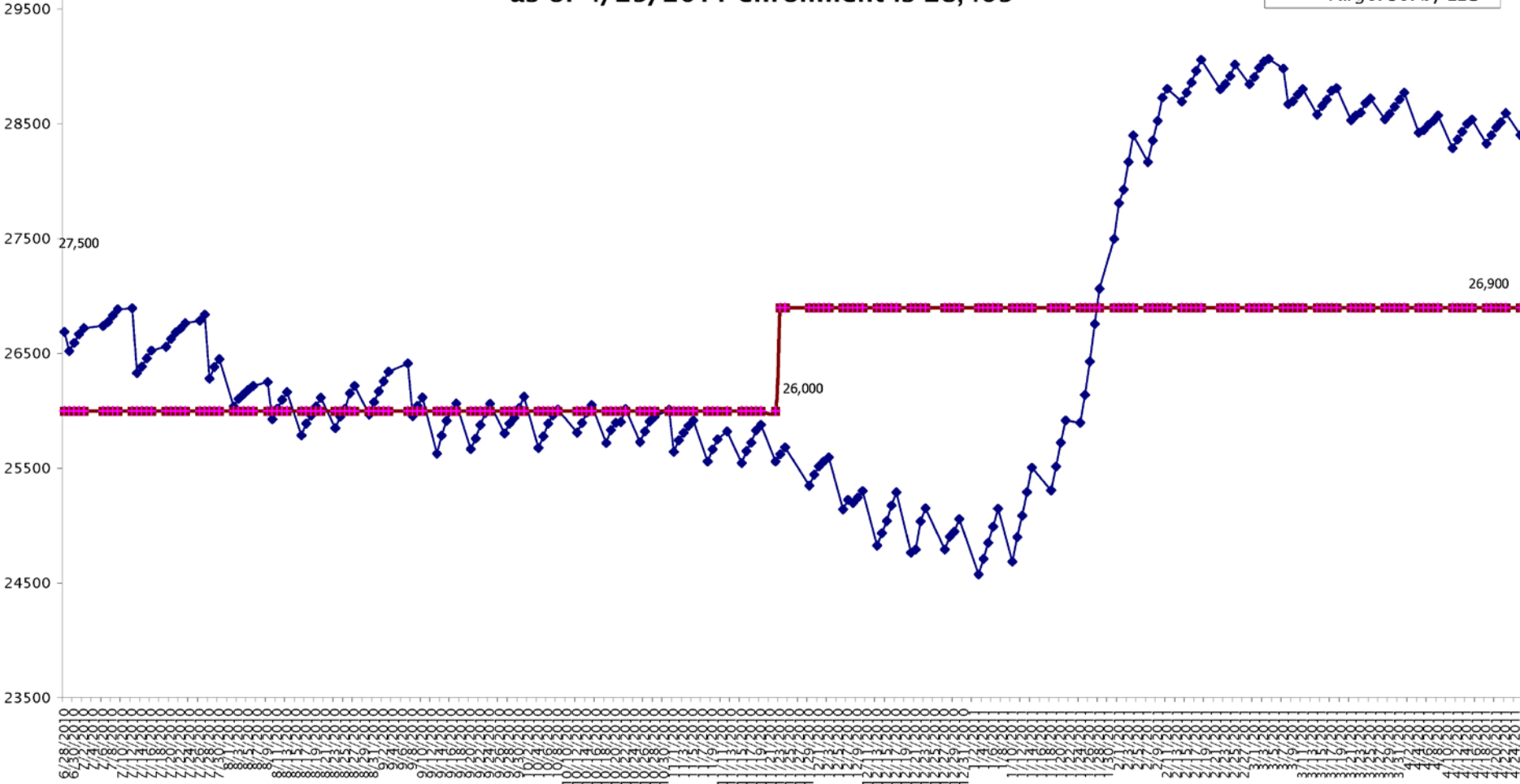
2009 Summer COE are included in total. March 271 and April 119
14,144 applications have been processed for the 2009-2010 school year

Source: EFS delivered through CDS report to Coalition

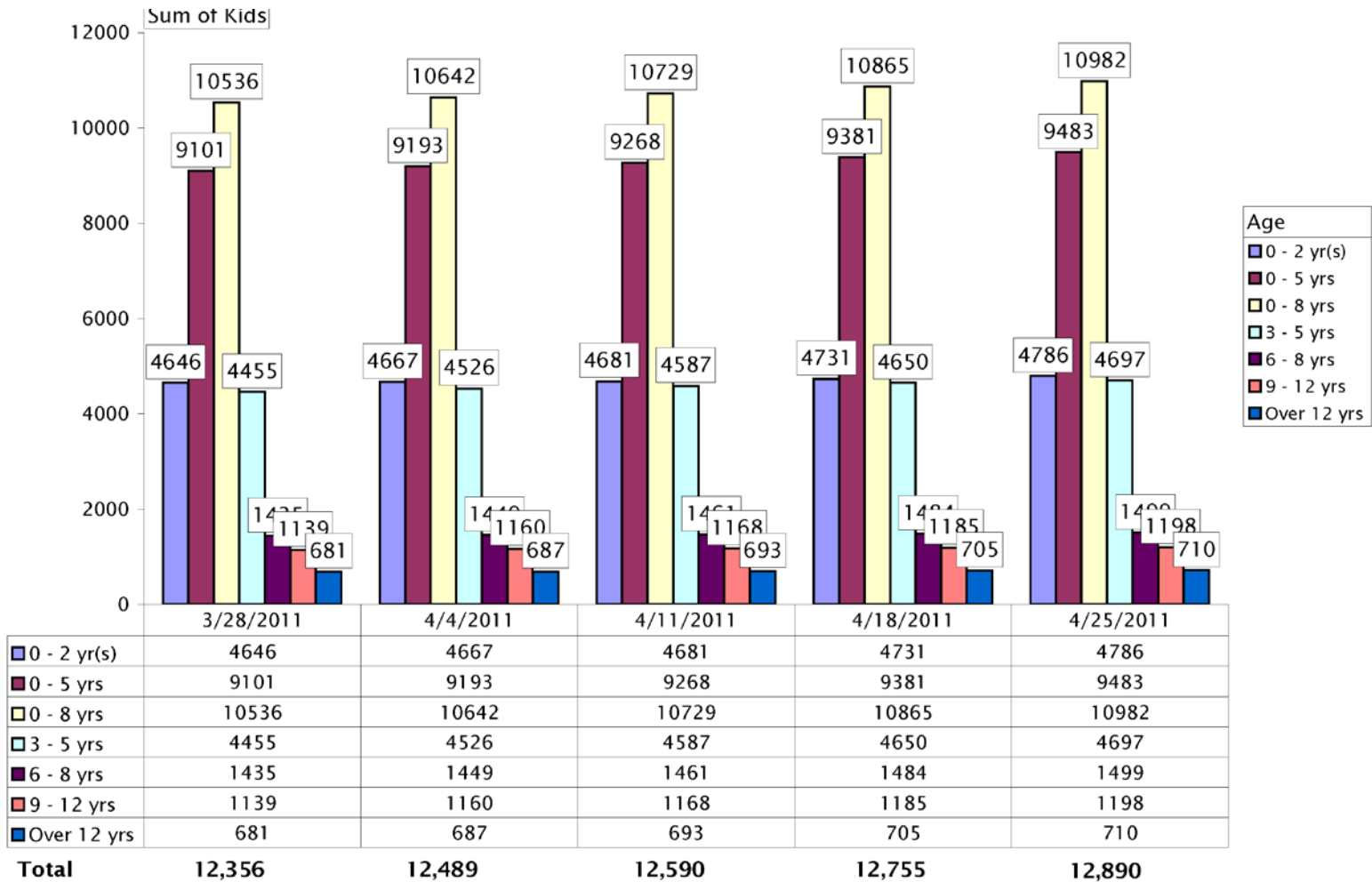


Early Learning Coalition of Miami-Dade Enrollment Targets, Currently 26,900 as of 4/25/2011 enrollment is 28,405

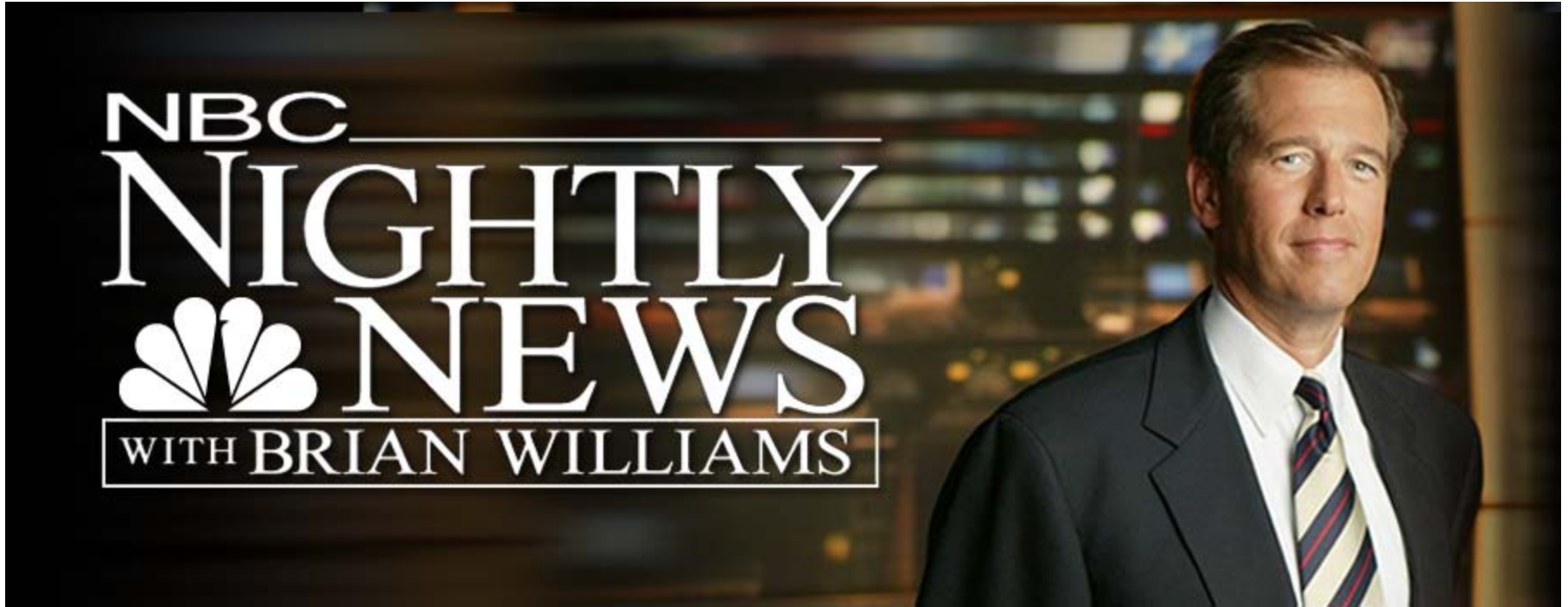
Source: ELC IT Weekly Report



Waitlist by Age Groupings



Preschool funding cuts spell trouble for kids



Click on image to begin video

How much does the ELC spend in slots per . . .

DAY \$585,626

Average payments to School Readiness (\$386,647) and VPK (\$198,979)

MONTH \$12,737,363

Average payments to School Readiness (\$8,409,569) and VPK (\$4,327,794)

YEAR \$152,848,347

Payments to School Readiness (\$100,914,826) and VPK (\$51,933,531)

Preschool funding cuts spell trouble for kids

School Readiness: We are facing a potential reduction of just over \$68 million, \$30 million in Temporary Assistance to Needy Families federal dollars that have not been restored by the legislature and just over \$38 million to make up for last year's reduction in the base allocation that was temporarily covered with ARRA dollars.

Impact: Over 15,000 less children will be served statewide. Reduction will also involve the disenrollment of children, reductions to a number of direct service programs currently funded by the ELC, and other measures necessary to address the funding reduction. This is very, very bad news for Florida's children and working families and for our state's long-term economic recovery and development.

Preschool funding cuts spell trouble for kids

Voluntary PreKindergarten: Reduction of administration and program support to 4%, from 4.5%. Just two years ago the percentage allowed was 5%. These dollars are mostly used for mandated program supports that include client eligibility (almost 30,000), program monitoring and accountability, provider certification (over 900), payments (over \$50 million) and quality assurance. It will be extremely challenging to meet all the VPK program requirements with just 4%.

BSA: Reduction in base student allocation (-7%: \$2,383 for school year & \$2,027 for summer)

Class Size: Potential ratio increase - 1:11 and 2:20. Packing more four year olds into a classroom is just not a good idea.