

# CEO Report

---

November 2, 2009





## AELC: The Power of Positive Practice

---

### □ Highlights Accomplishments of Florida's 31 ELCs

- ELCs leverage over \$50 million to match and supplement federal and state funding
- ELCs have established research-based early literacy, family support, inclusion and assessment services, and quality improvement programs to meet local needs.
- ELCs average 9.5% on administrative and program support costs, well below cap of 19%
- AELC opened office in Tallahassee in FCSC space in 2009. AELC partner FAN has space at same location.
- AELC has the advocacy power of 31 local boards.
- E. Torres represents large coalitions on AELC executive committee.



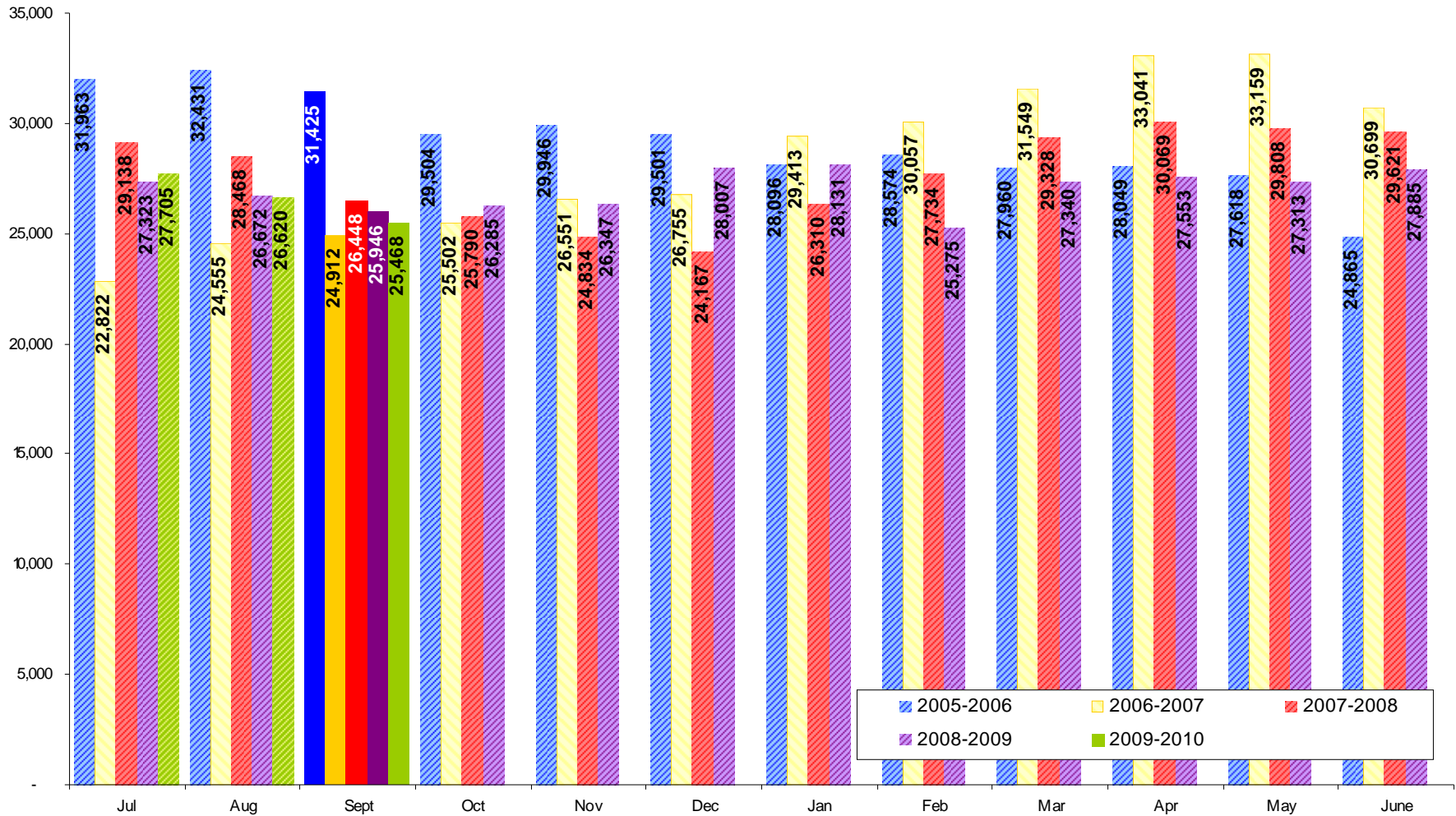
## AWI Legislative Budget Requests

---

- \$38 million recurring dollars for VPK to restore non-recurring dollars
- \$18 million non-recurring for VPK to cover the 2008-09 & projected 2009-10 deficit
- \$22.5 million recurring budget for VPK 2010-11 projected growth of 8,439 children
- \$2.5 million recurring dollars for SR to restore non-recurring dollars

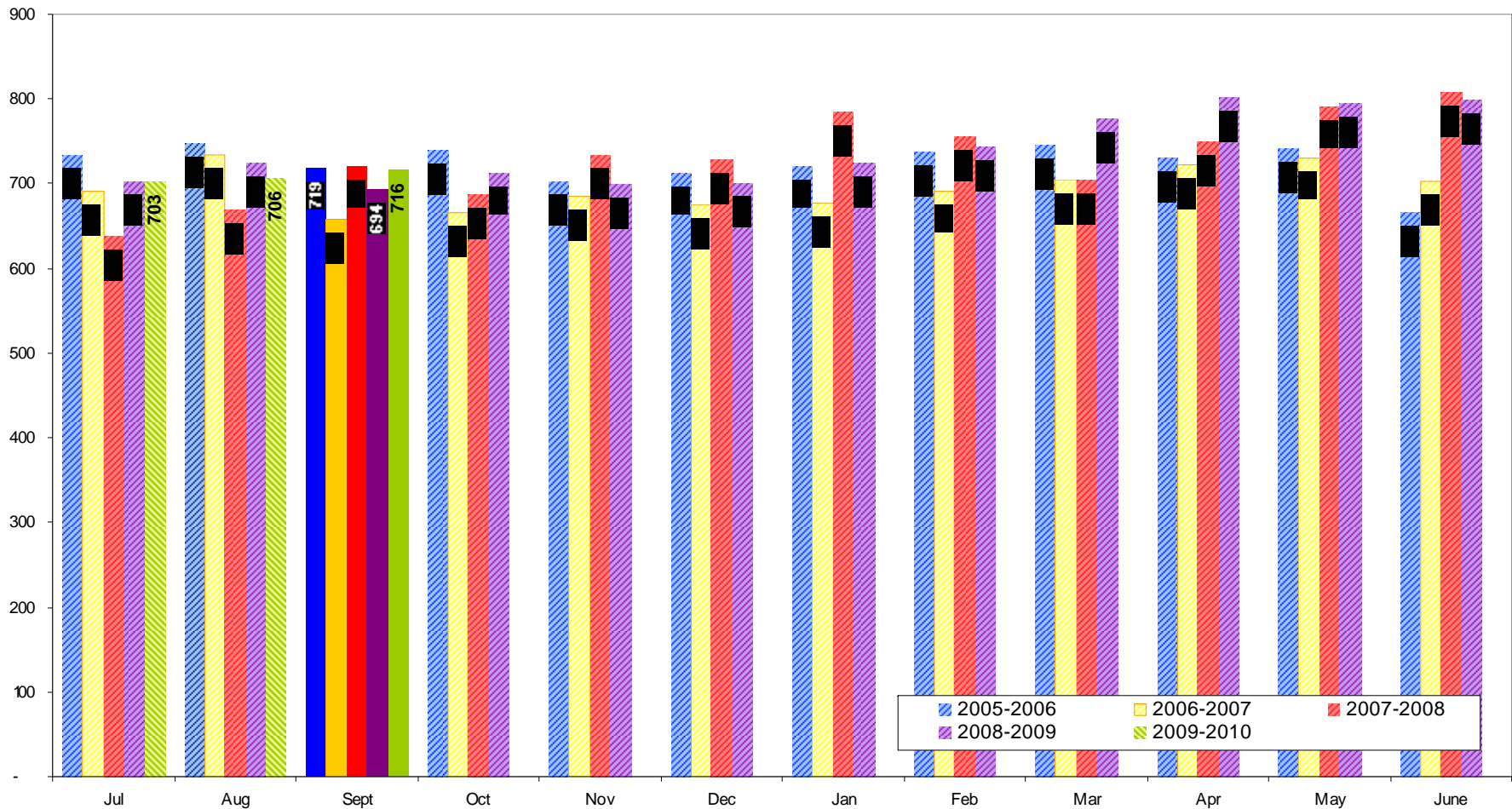
Note: Last year the VPK reimbursement and admin rate were reduced, with admin reduced retroactively. Monroe is currently unable to operate its VPK program with its state VPK admin allocation.

# School Readiness Paid: Miami-Dade



Note: July '09 Paid is impacted by the provider agreements not being signed by over 300 providers

# School Readiness Paid: Monroe

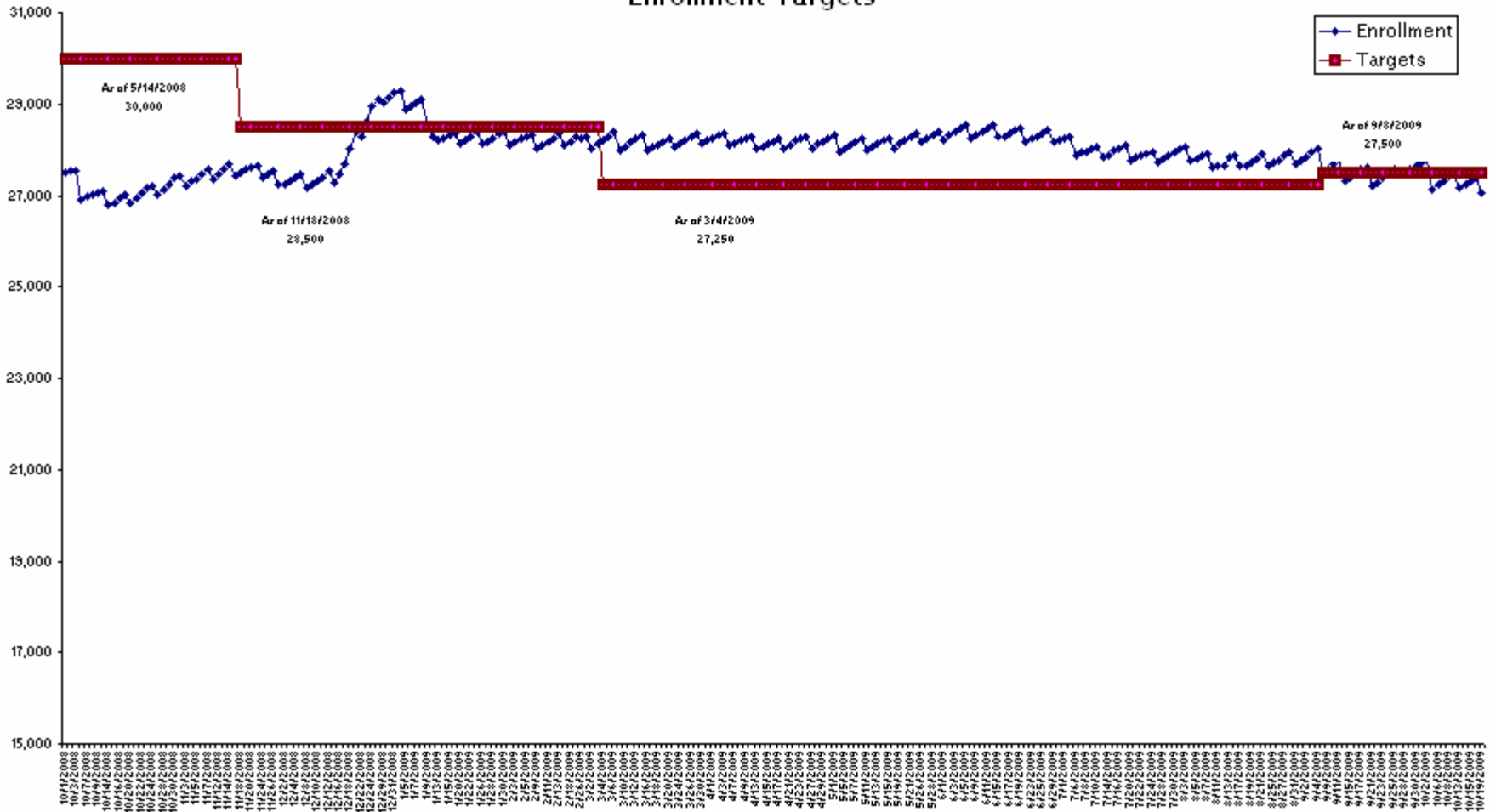


Source: EFS 5045 Monroe

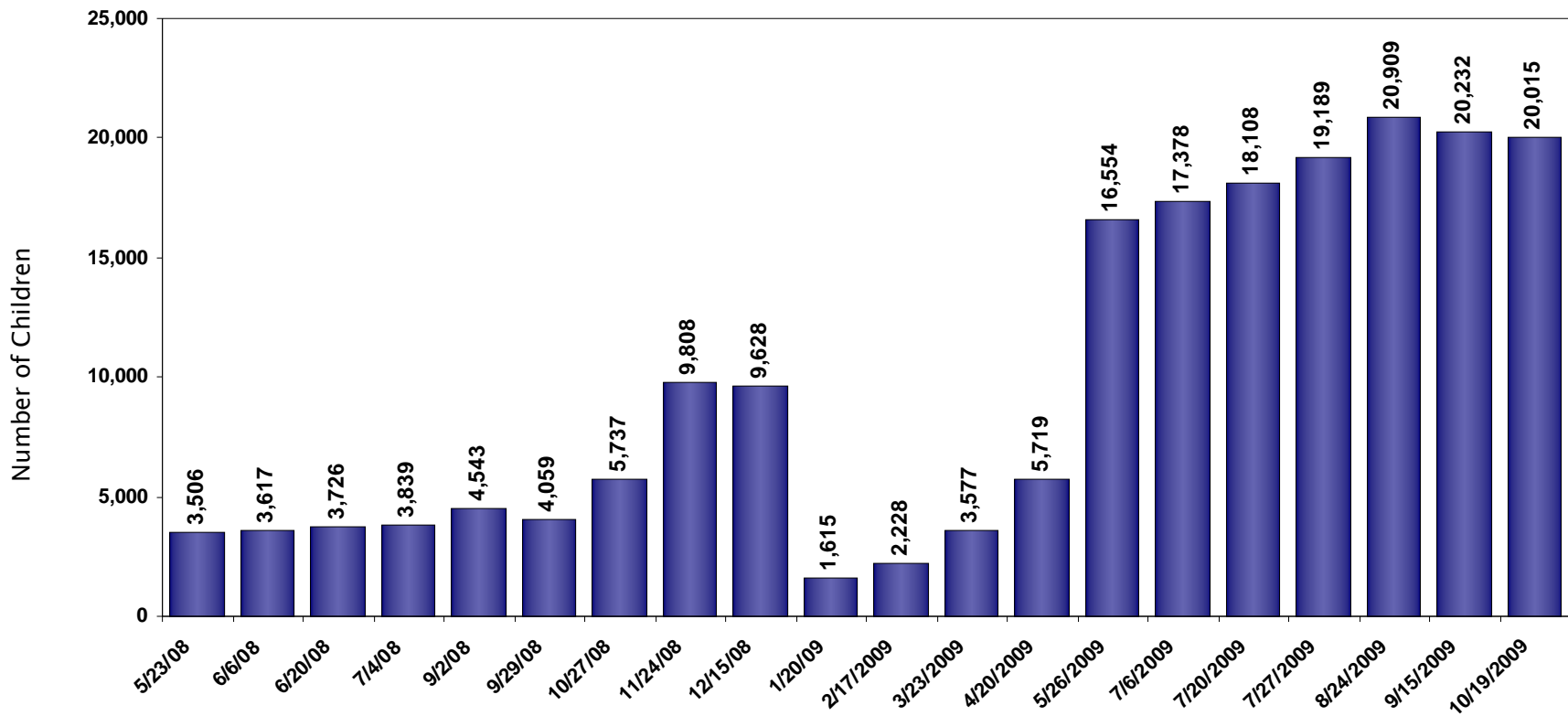


# Enrollment Targets: Miami-Dade

Early Learning Coalition of Miami-Dade  
Enrollment Targets



# Wait List: Miami-Dade

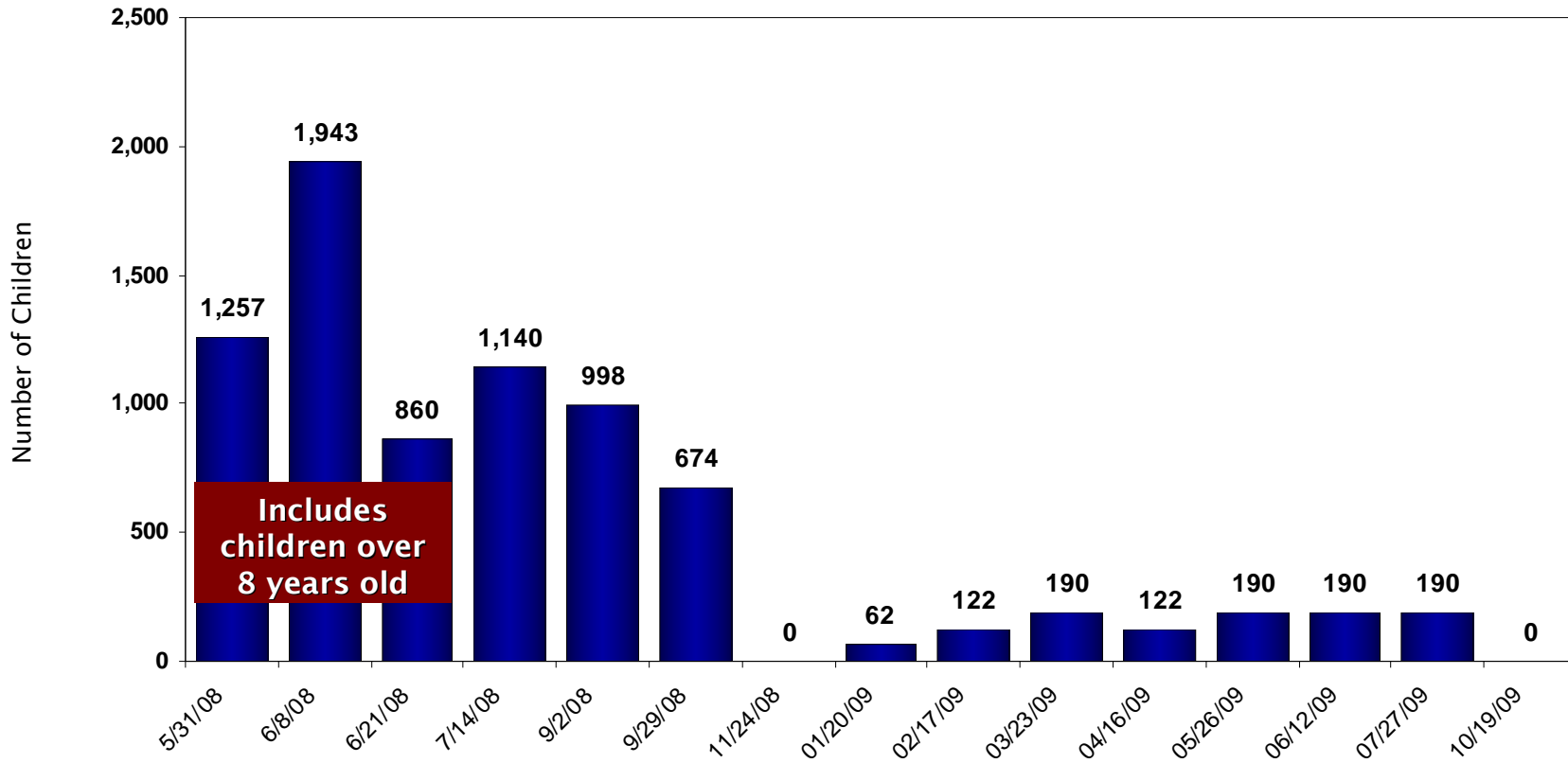


Source: EFS Ad Hoc Query

The waitlist includes children 0 to 12 and over

There are **3728** children within the age of 0 to 8, leaving **815** ages 9 and older

# Ready Pool: Miami-Dade

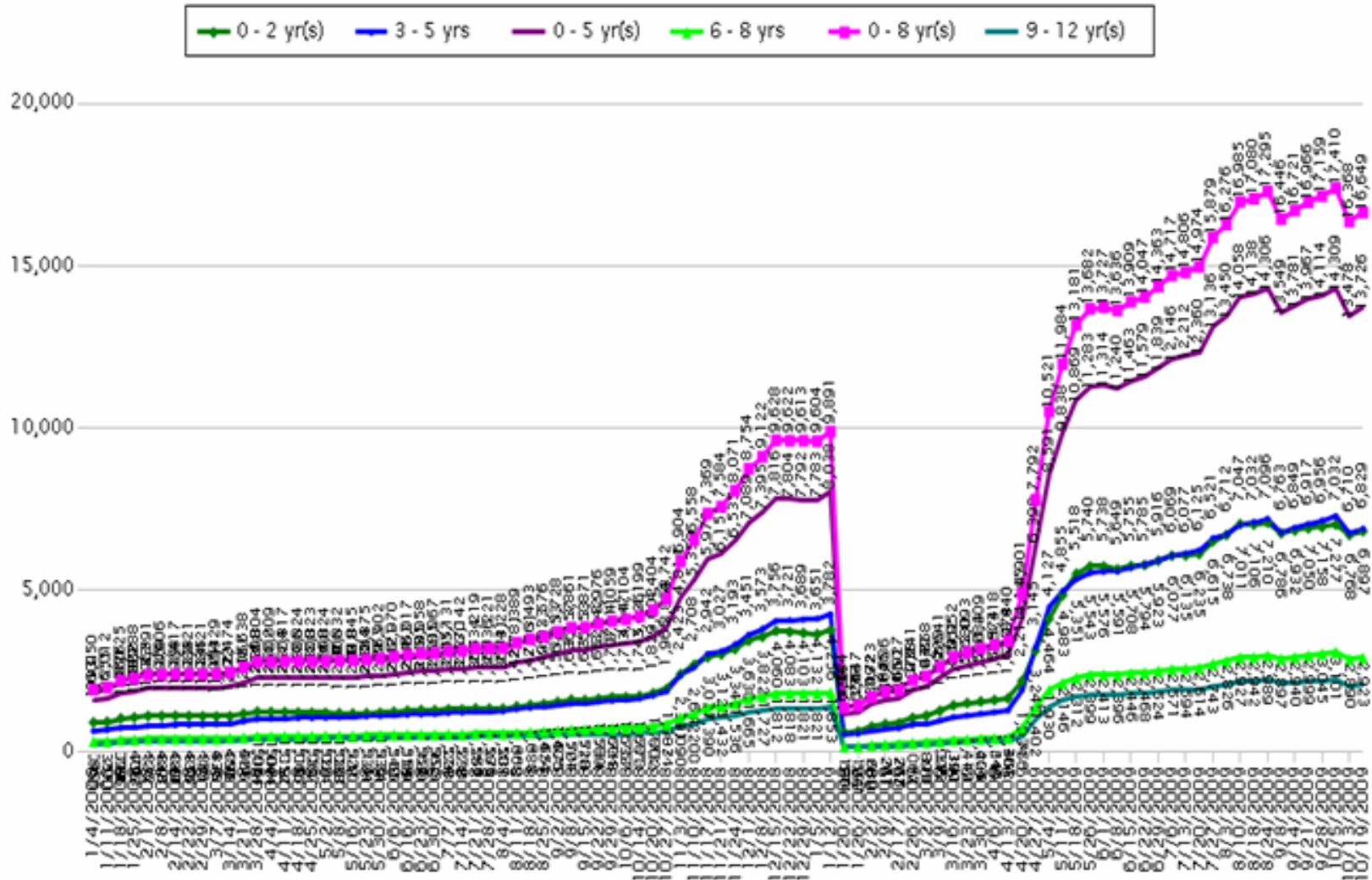


Source: Weekly Report EFS Ad hoc Report Using Impromptu

as of 6/21/2008 we are no longer serving children older than 8. The number increased from 860 to over 1100 because there were families holding appointments who were subsequently processed and added to the Ready Pool.

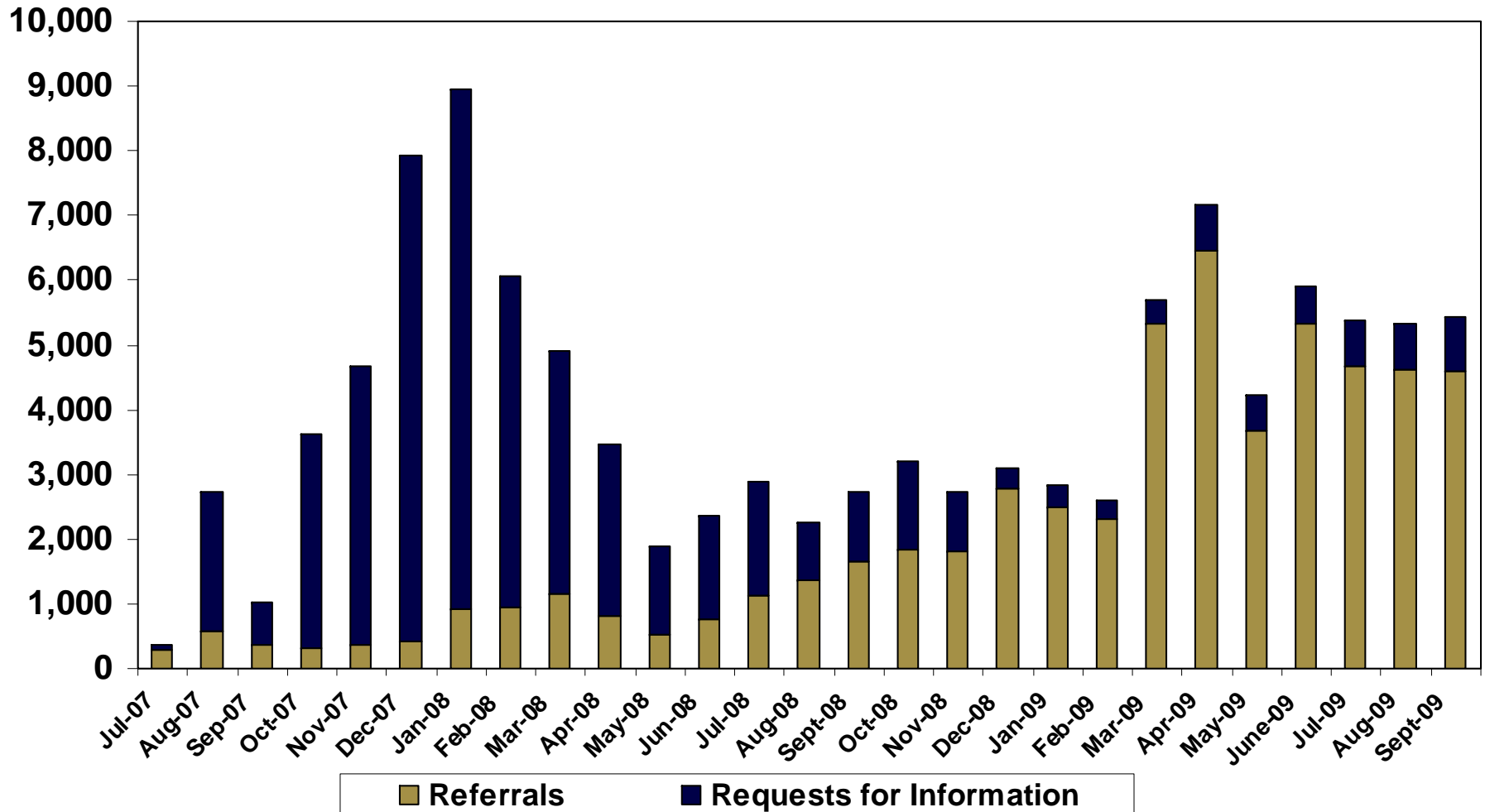


# Waiting List By Age Group: Miami-Dade

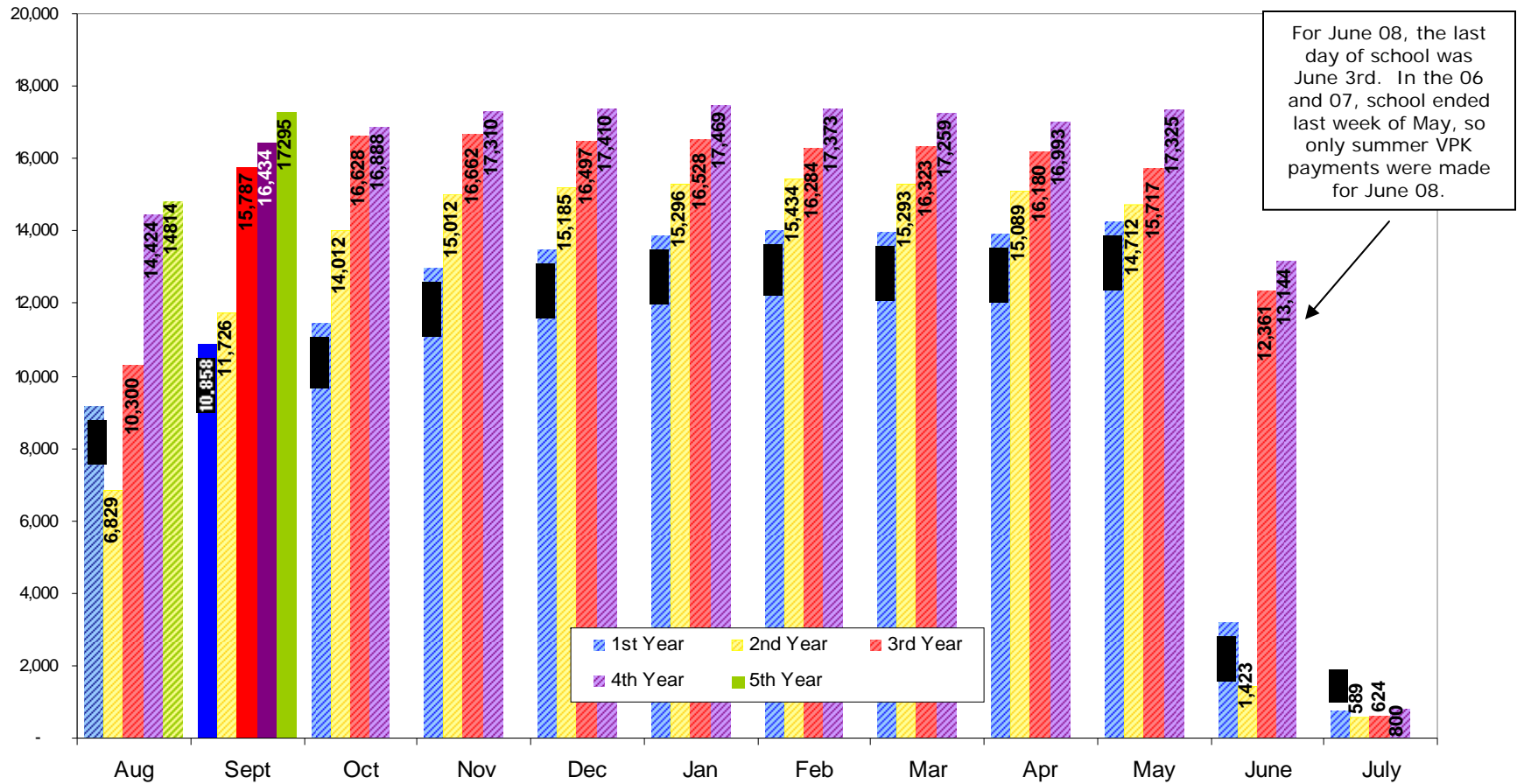


Source: ELC IT Weekly Report

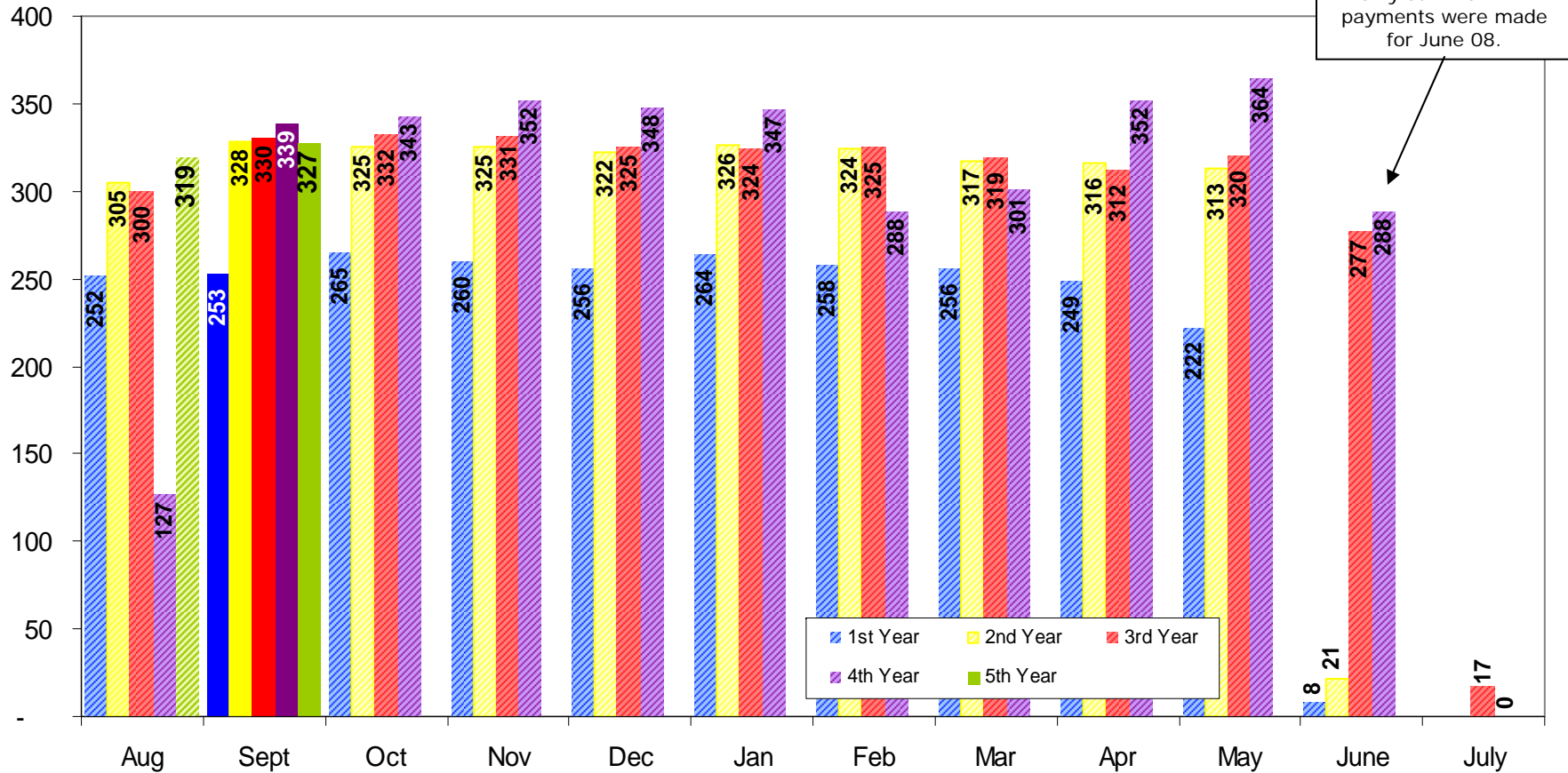
# Resource & Referral: Miami-Dade



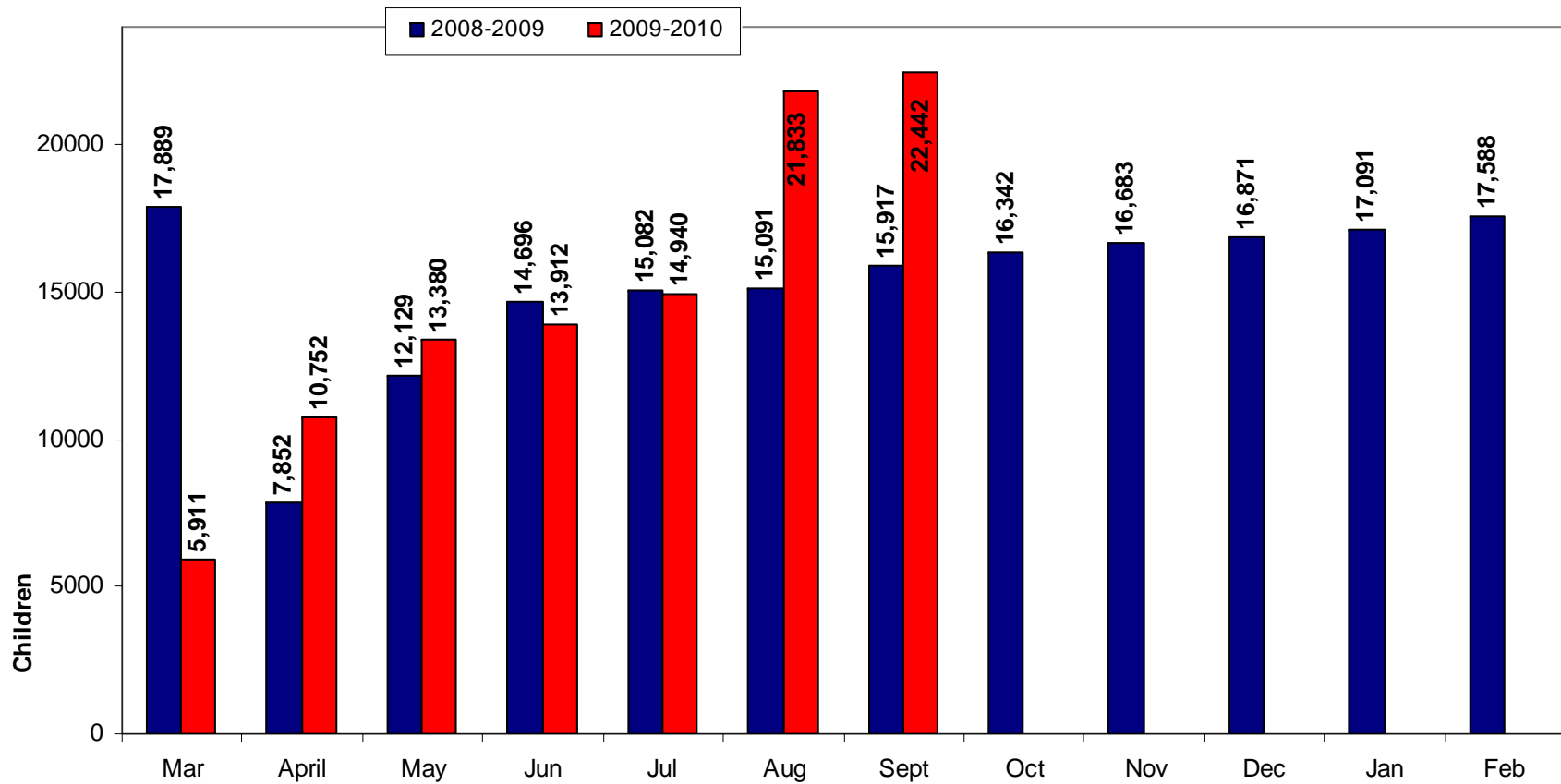
# VPK Paid: Miami-Dade



# VPK Paid: Monroe



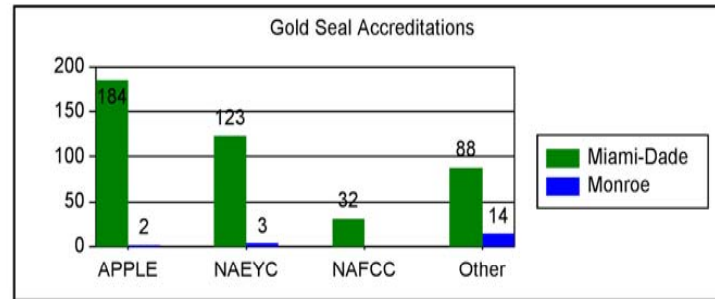
# VPK Certificates of Eligibility: Miami-Dade



Source: EFS

2009 Summer COE are included in total. March 271 and April 119  
14,144 applications have been processed for the 2009-2010 school year

# Accreditation



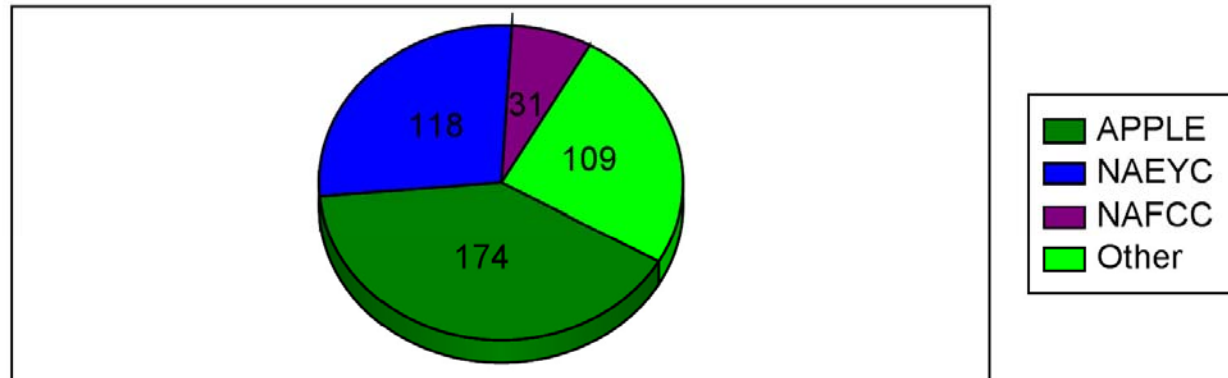
Gold Seal Sites by County

| County             | License Type                            | Sites      |
|--------------------|---|------------|
| <b>Miami-Dade</b>  |   |            |
|                    | Child care facility (licensed)          | 319        |
|                    | Family day care home (licensed)         | 3          |
|                    | Large family child care home (licensed) | 29         |
|                    | Religious Exempt Facility               | 2          |
|                    | School Exempt                           | 25         |
| <b>Subtotal</b>    |   | <b>378</b> |
| <b>Monroe</b>      |   |            |
|                    | Child care facility (licensed)          | 9          |
|                    | School Exempt                           | 8          |
| <b>Subtotal</b>    |   | <b>17</b>  |
| <b>Total Sites</b> |   | <b>395</b> |

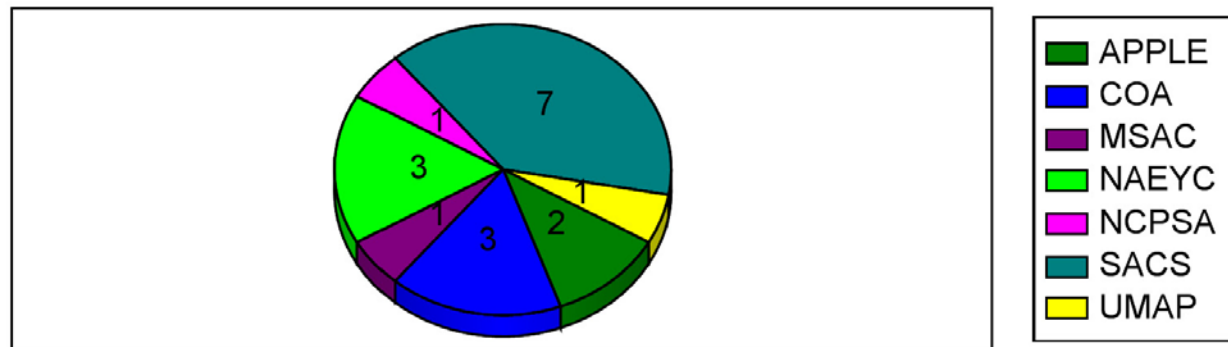
Source: WELS/United Way

# Accreditation

Miami-Dade - List of valid accreditations



Monroe - List of valid accreditations





# Accreditation

## Accredited Individual Sites by County

| County             | License Type | Sites      |
|--------------------|--------------|------------|
| Miami-Dade         | Center       | 362        |
| Miami-Dade         | Family       | 31         |
| Monroe             | Center       | 17         |
| <b>Total Sites</b> |              | <b>410</b> |

Source: WELS/United Way

## Breakdown of Accreditations

| Accreditation Body |   | Miami-Dade | Monroe    |
|--------------------|---|------------|-----------|
| ACSI               | Association of Christian Schools Interntional                           | 1          |           |
| ACTS               | Association of Christian Teachers and Schools                           | 1          |           |
| AMS                | American Montessori Society   | 2          |           |
| APPLE              | Accredited Professional Preschool Learning Environment                  | 174        | 2         |
| BISA               | Bilingual School Association  | 29         |           |
| COA                | Council of Accreditation Commission                                     | 5          | 3         |
| COBIS              | Council of Bilingual Schools  | 3          |           |
| CSF                | Christian Schools of Florida  | 1          |           |
| Accreditation Body |   | Miami-Dade | Monroe    |
| FACCS              | Florida Association of Christian Colleges and Schools                   | 2          |           |
| FCIS               | Florida Council of Independent Schools                                  | 3          |           |
| FKC                | Florida Kindergarten Council  | 8          |           |
| NAC                | National Accreditation Commission                                       | 6          |           |
| NACECEP            | National Accreditation Commission for Early Care and Education Programs | 2          |           |
| NAEYC              | National Association of the Education of Young Children                 | 118        | 3         |
| NAFCC              | National Association of Family Child Care                               | 31         |           |
| NCPSA              | National Council of Private Schools Accreditation                       | 9          | 1         |
| NIPSA              | National Independent Private Schools Association                        | 2          |           |
| SACS               | Southern Association of Colleges and Schools                            | 33         | 7         |
| UMAP               | United Methodist Association of Preschools                              | 2          | 1         |
| MSAC               | Montessori School Accreditation Commission                              |            | 1         |
| <b>Total</b>       |   | <b>432</b> | <b>18</b> |



## IBM Young Explorers

- ❑ The Coalition received a grant of more than \$100,000 from IBM as part of a donation of 50 KidSmart computer learning centers
- ❑ The grant is part of a \$2 million nationwide initiative by IBM to provide 1,000 computers and teaching curriculum that provide services to areas with more than 40 percent Hispanic population.
- ❑ In Miami, thirteen were selected to receive the computers.



- ❑ IBM launched the initiative as part of its commitment to generate interest in math and science for all students and to ultimately increase the number of people entering into science, math and technology careers.

