



HIPPYUSA
Home Instruction for Parents of Preschool Youngsters

EARLY LEARNING COALITION OF
MIAMI-DADE/MONROE
JUNE 4, 2012



PRESENTATION OVERVIEW

- ① Profile
- ① History
- ① Delivery Model
- ① HIPPY Model
- ① The Research
- ① Community Impact
- ① Closing Remarks
- ① Key Contacts



PROFILE

- ⊙ School Readiness program for parents of children ages 3-5 focusing on home based literacy
- ⊙ HIPPY empowers parents as their child's first teacher and supports future academic success
- ⊙ Designed to bring underserved families, organizations, neighborhoods, and communities together
- ⊙ Strengthen underserved families by removing barriers to economic and community services
- ⊙ 1 of only 9 (certified 2011) nationally recognized home visiting models that meets the evidence based criteria of the Maternal, Infant, Early Childhood Home Visiting Program



HIPPYUSA

HISTORY

- ⦿ Piloted with diverse immigrant communities and supported by NCJW at The Hebrew University of Jerusalem (1969). Director, Dr. Avima Lombard
- ⦿ Operates internationally with fidelity to the HIPPY model (12 countries): Miami since 1985
- ⦿ HIPPY USA: (2012) 23 states, 141 sites, 16,000 families
- ⦿ HIPPY Florida:(2012) 17 counties, 2,500 families
- ⦿ HIPPY – Miami-Dade County
 - ⦿ M-DCPS (1985) 30 families; (2012) 268 families/278 children, 22 communities
 - ⦿ Family Central Inc. (FCI) (2004) 125 families;(2012) 127 families/134 children
 - ⦿ M-DCPS and FCI nationally recognized stellar programs
 - ⦿ Funding: Title I, The Children's Trust, OEL/TANF

NCJW®

National Council of Jewish Women



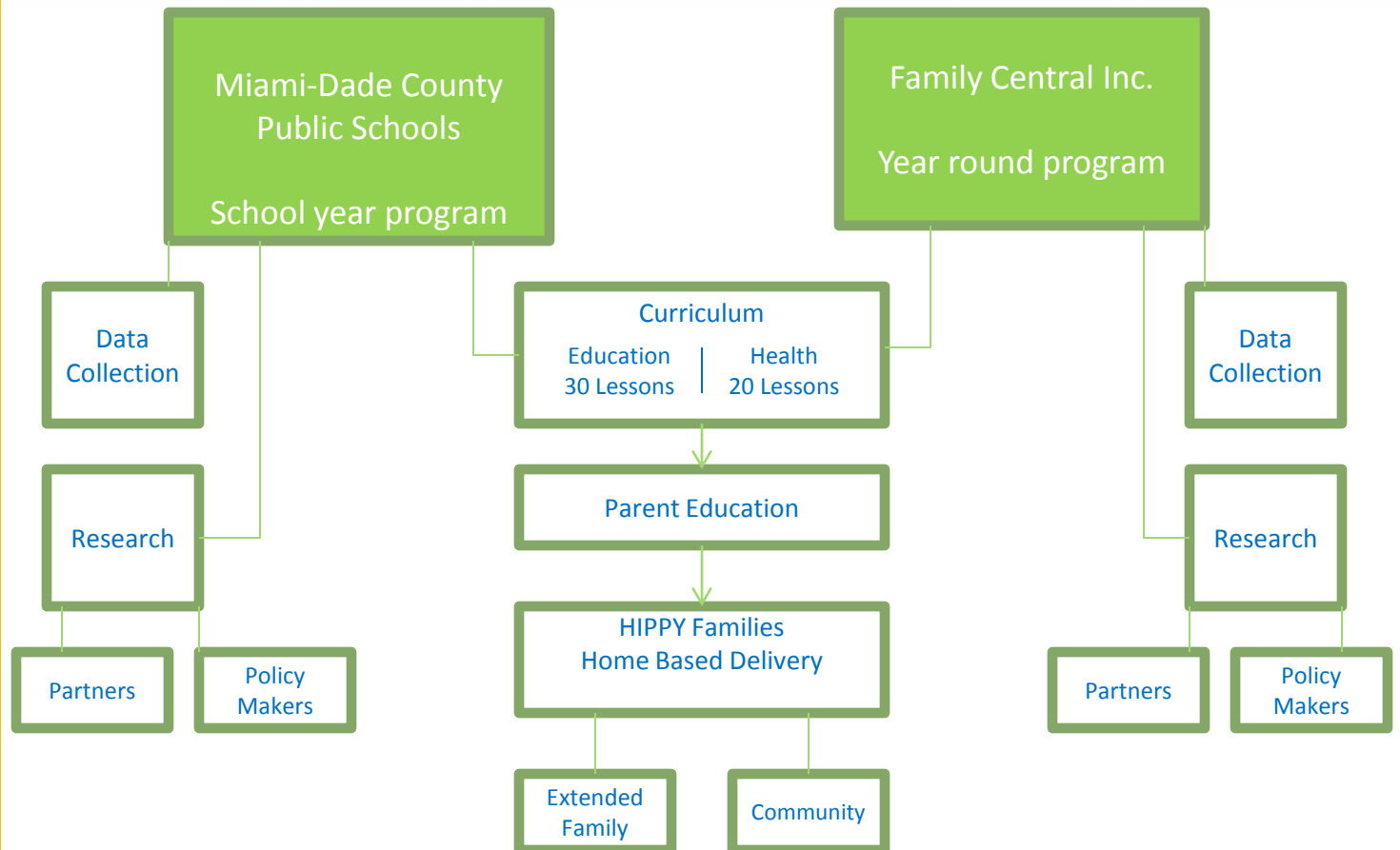
HIPPYUSA

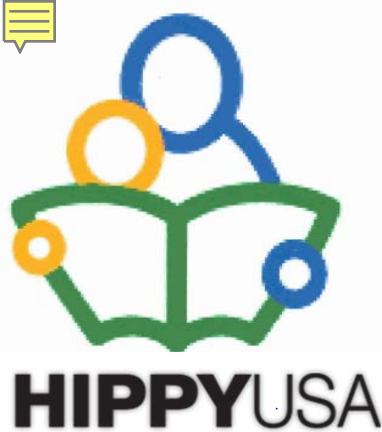
DELIVERY MODEL

Hippy Curriculum

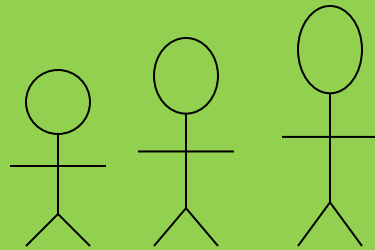
- 10 learning goals
 - Aligns with Florida Early Learning Standards

- Physical and Health development
- Social Emotional
- Approaches to learning
- Language development
- Literacy knowledge
- Mathematics
- Science
- Creative Arts
- Logic and Reasoning
- Social Studies





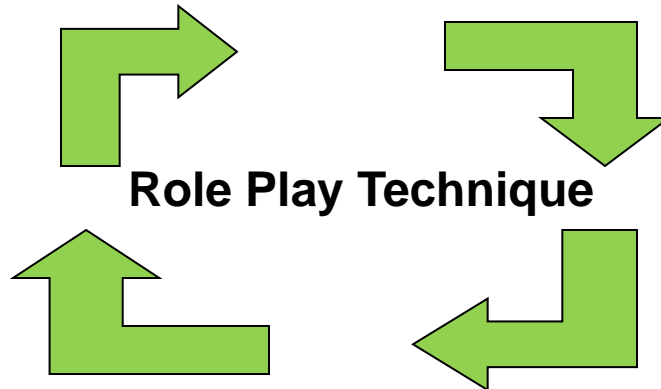
THE HIPPIY MODEL



**3-year home based curriculum
30 weeks per year**



**Coordinator
Staff of Home Visitors**



Home Visits and Group Meetings



THE RESEARCH

Research Summary Highlights

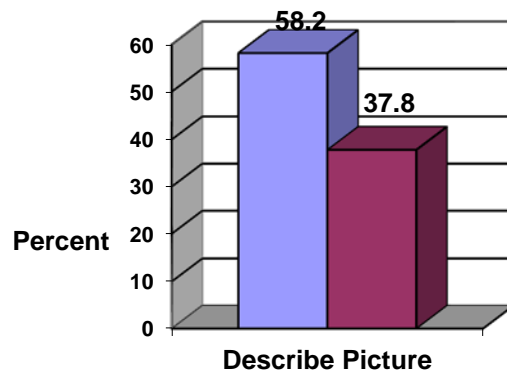
- ◎ **Florida HIPPY Parent Involvement Study (268 parents English/Spanish)**
 - Fall 2011-documented frequency w/which 1st yr HIPPY parents take part in various home literacy & community activities with their children
 - Results compared w/parents in 2007 National Household Education Study (NHES)

- ◎ **Florida HIPPY Longitudinal Study (2,452 enrolled)**
 - Began in 2005 to demonstrate sustainability of HIPPY's influence on academic performance
 - Florida DOE provides the kindergarten & FCAT test scores to Florida HIPPY State Office researcher

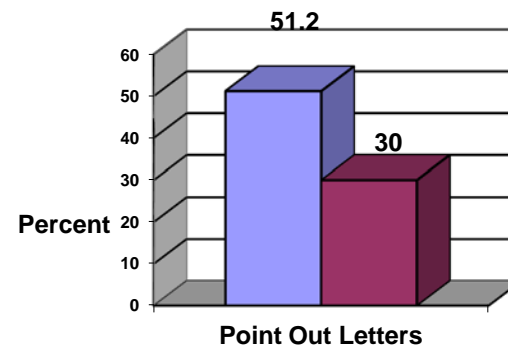


FLORIDA HIPPY PARENT INVOLVEMENT STUDY

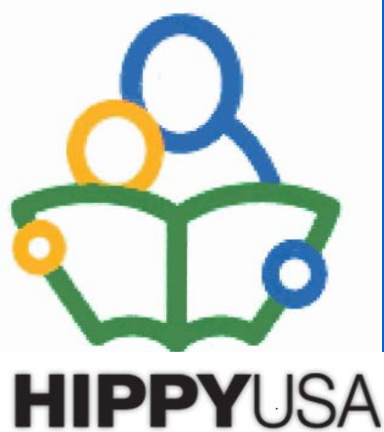
Increased Dialogic Reading



■ HIPPY N=202
■ NHES N=213

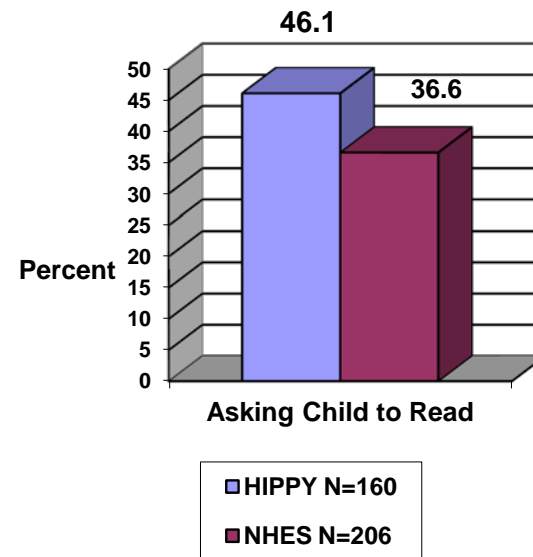
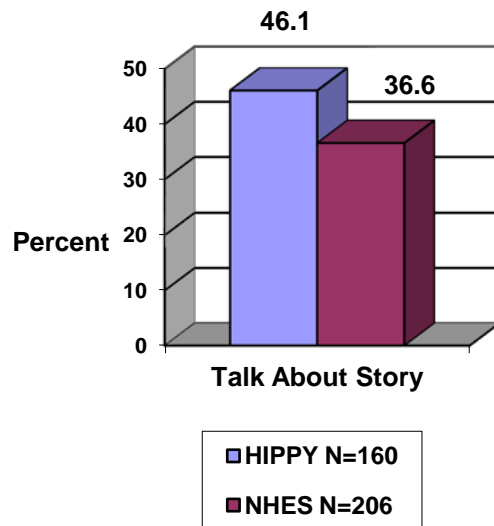


■ HIPPY N=176
■ NHES N=169



FLORIDA HIPPY PARENT INVOLVEMENT STUDY

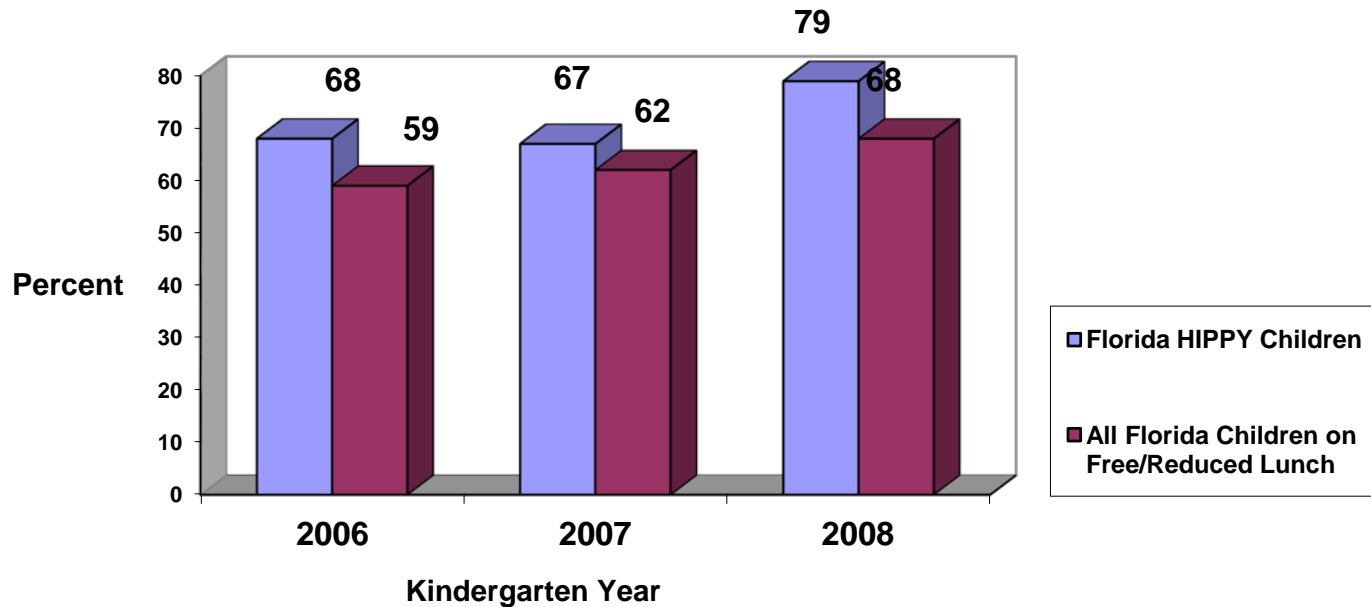
Increased Oral Language





FLORIDA HIPPY LONGITUDINAL STUDY

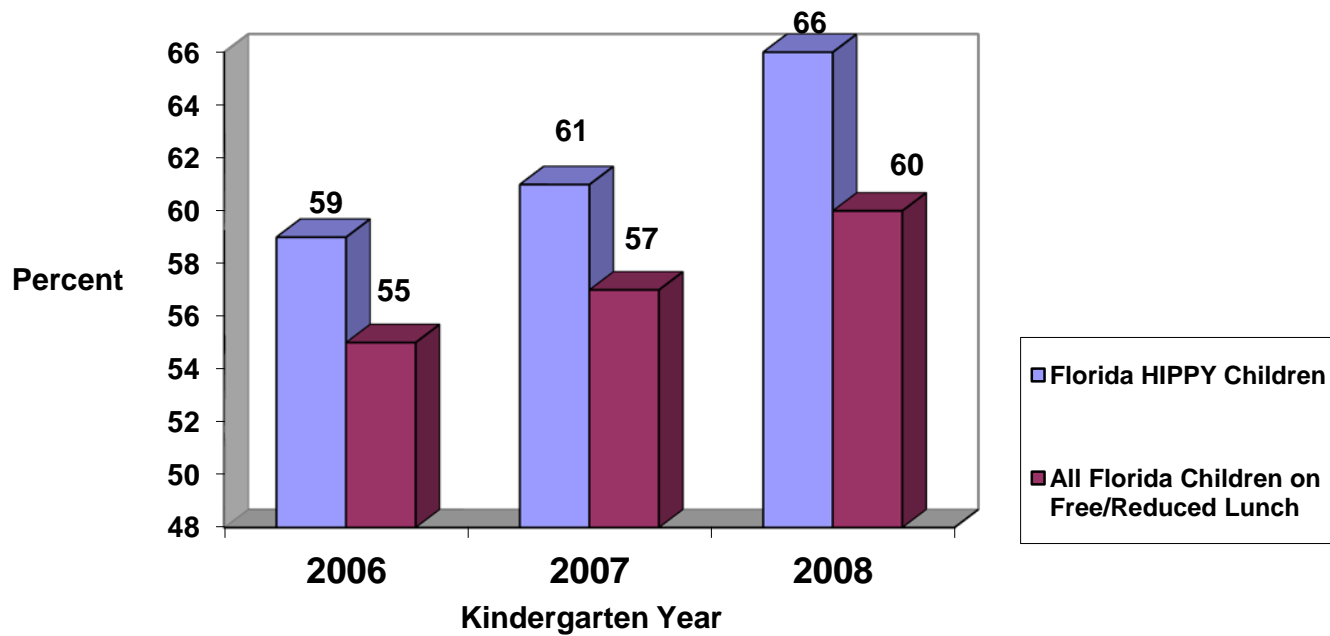
Kindergarten Children Scoring At or Above Grade Level on the DIBELS Letter Naming Fluency Test

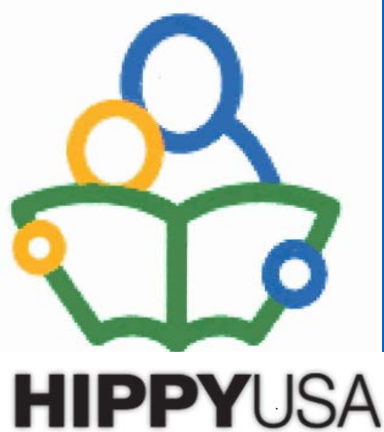




FLORIDA HIPPY LONGITUDINAL STUDY

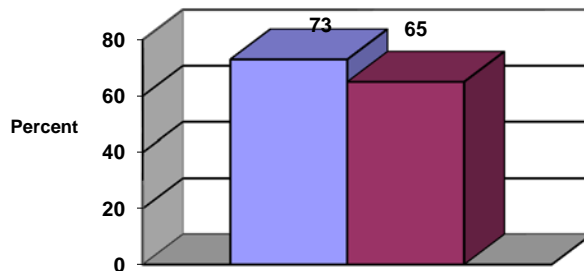
Kindergarten Children Scoring At or Above Grade Level on the DIBELS Initial Sound Fluency Test





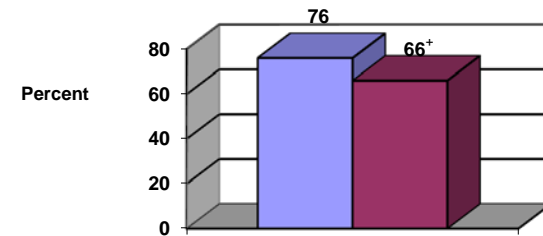
FLORIDA HIPPIY LONGITUDINAL STUDY

**FCAT Reading Achievement
Grade 4 - 2009
Level 3 and Above**



■ 4th Grade HIPPIY
■ All Florida Children on Free/Reduced Lunch

**FCAT Math Achievement -
Grade 4 - 2009
Level 3 and Above**

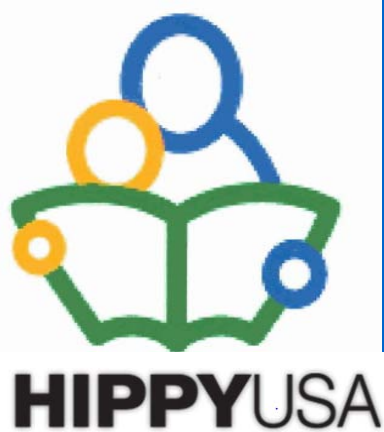


■ 4th Grade HIPPIY
■ All Florida Children on Free/Reduced Lunch



2011 EVALUATION OF NATIONAL ROLLOUT HIPPY AUSTRALIA

- ⊙ ROI-\$2.53-4.00 for every dollar spent on HIPPY Australia
- ⊙ When compared with the Australian norm, parents involved in HIPPY were:
 - ⊙ 81% more likely to report child's math ability better than classmates
 - ⊙ 3 times more likely to be in contact with their child's school, learning and development
 - ⊙ 66% less likely to have concern about their child's speech development
 - ⊙ 85% less likely to have concerns about their child's receptive language



COMMUNITY IMPACT

- ◎ Nan Rich HIPPY Family Resource Center introduces families to M-DCPS services and works collaboratively with community agencies to focus on family literacy and social needs
- ◎ FCI/HIPPY has served more than 400 families in District 1-Miami Gardens and other high poverty census tracts since 2005
- ◎ Seventeen NCJW scholarship recipients reside in District 1 and other high poverty census tracts
- ◎ HIPPY Advisory Committee represents a cross section of practitioners and stakeholders



CLOSING REMARKS

- ③ Intersection between HIPPY and the role and mission of the Early Learning Coalition
- ③ HIPPY and The Children's Trust-Read to Learn
- ③ Expansion and steps



KEY CONTACTS

- ◎ Dr. Henry A. Green, HIPPY Advisory Board Chair,
University of Miami hgreen@miami.edu
- ◎ Wendy Salomon, Vice President,
Family Central Inc. wsalomon@familycentral.org
- ◎ Dr. Sharrie Dean Collins, District Director,
Title I Administrator M-DCPS sdean@dadeschools.net